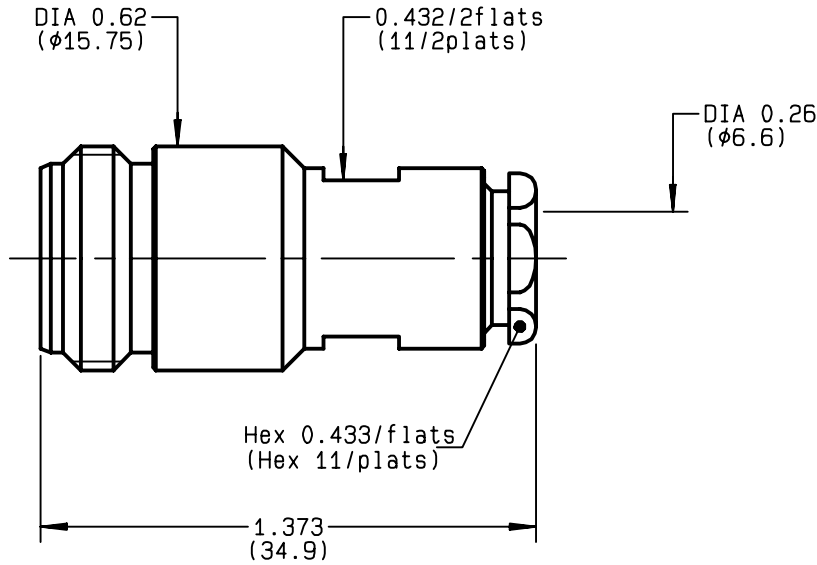


**STRAIGHT JACK CLAMP TYPE
CABLE 6/75+93 S**

R161.212.000
SERIES N



| | | |
|---------------------------------|----------------------------------|--|
| NOMINAL IMPEDANCE | 50 Ω | CABLES : BICC T3304 KX 6A RG 59 RG 62 RG 71 |
| FREQUENCY RANGE | 0-11 GHz | |
| TEMPERATURE RATING | -55/+155 °C | |
| V.S.W.R | NA + x F(GHz)Maxi | |
| RF INSERTION LOSS | 0.048 √F(GHz) dB Maxi | |
| VOLTAGE RATING | 850 Veff Maxi | |
| DIELECTRIC WITHSTANDING VOLTAGE | 1500 Veff Mini | |
| INSULATION RESISTANCE | 5000 MΩMini | |
| HERMETIC SEAL | NA Atm.cm ³ /s | |
| LEAKAGE (pressurized only) | NA | |
| MECHANICAL DURABILITY | 500 Cycles | OTHERS CHARACTERISTICS |
| WEIGHT | 29.5 gr | CABLE RETENTION 200 N Mini |
| SPECIFICATION | | CENTER CONTACT RETENTION |
| | | Axial force - mating end NA N Mini |
| | | Axial force - opposite end 27 N Mini |
| | | Torque NA cm.N Mini |
| | | RECOMMENDED TORQUES |
| | | Mating NA cm.N |
| | | Panel nut NA cm.N |
| | | Clamp nut 450 cm.N |

| CONNECTOR PARTS | MATERIALS | FINISH | (all values are given in micrometers) |
|-----------------|------------------|------------------------|---------------------------------------|
| BODY | BRASS | BBR 2 | |
| OUTER CONTACT | BRASS | BBR 2 | |
| CENTER CONTACT | BERYLLIUM COPPER | GOLD 0.5 OVER NICKEL 2 | |
| INSULATOR | PTFE | - | |
| GASKET | - | - | |
| OTHERS PIECES | BRASS | BBR 2 | |

| | | |
|----------------|-------------------|------------------|
| ISSUE | CREATION DATE | FILE PART-NUMBER |
| 9817R01 | 15/10/1992 | EPC 96-07 |



BONMINI

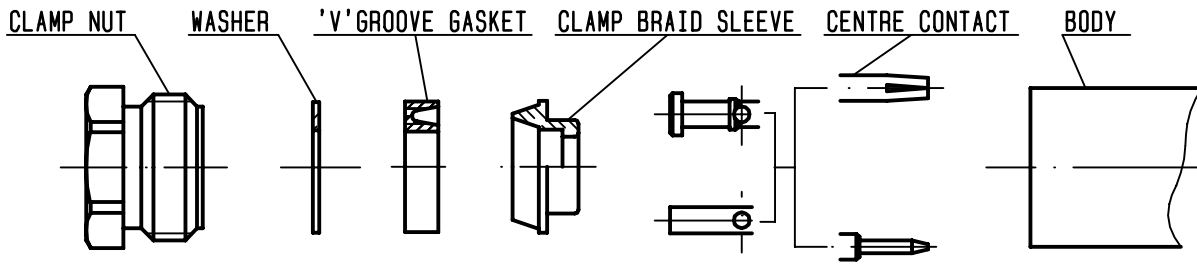
The information given here is subject to change without notice. Design changes may be in order to improve the product .

Connect to the future



R161.212.000

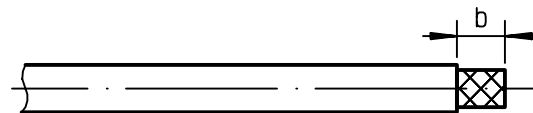
ISSUE **9817R01** SERIES **N**



①

Strip the cable .

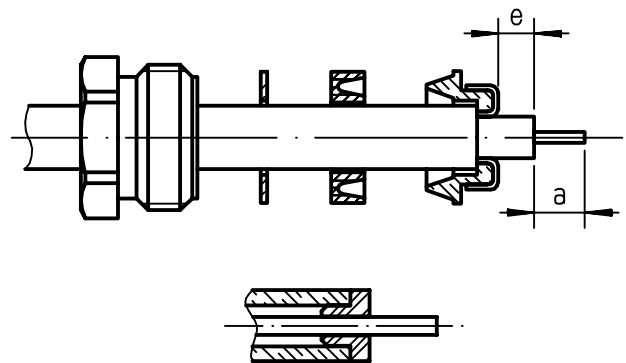
-
-
-
-



| Stripping | a | b | c | d | e |
|-----------|-------|-------|---|---|-------|
| inch | 0.157 | 0.295 | 0 | 0 | 0.039 |
| mm | 4 | 7.5 | | | 1 |

②

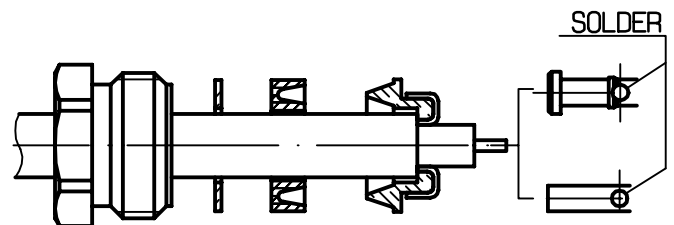
Slide the clamp nut , the washer and the 'V'groove gasket onto the cable .
 Slide clamp braid sleeve over braid .
 Fold back braid and trim off surplus braid .
 Trim back dielectric as shown .
 -
 NOTA: For air-space PE cables , "e" = 0 .
 Introduce insulator onto dielectric cable .



③

Solder the cable inner conductor into centre contact .

-
-
-
-



④

Screw sub-assembly into the connector body .
 (recommended coupling torque 39.82 in.lb)

-
-

